

## Colony Extraction from a Porch Ceiling in a T.Wells Property.

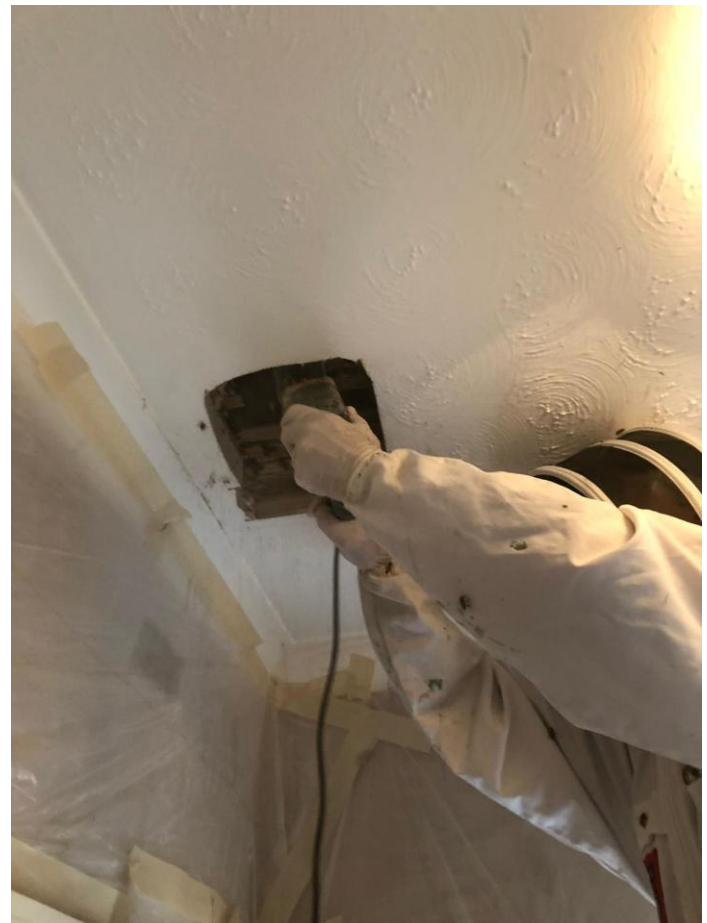


This historic Tunbridge Wells property is now divided into 12 modern flats and bees were entering the porch of one of these flats, highlighted by the red circle.

Initially we used this infrared gun to check any increase in the surface temperature of the porch ceiling to establish the size of the brood nest. It also usefully gave us an idea where the rafters were positioned.



John used a jig saw to make the first cut downstream of the brood.



This initial hole was enlarged downstream of the colony, so we could insert foam to block the escape of the queen further down the cavity.



Here Sarah is using the Bee-vac to remove some of the bees, to make comb removal a little easier.



This shows the exposed honeycomb of part of the colony. The colony also extended into the porch overhang, which is hidden from this view.



The four different layers of ceiling illustrate the work that has taken place on the ceiling during the lifetime of this property. The top layer was modern plasterboard, then foam, hard plaster and finally the original lathe & plaster layer. All of which the jigsaw had to cut through.



And finally the removal of honey comb by Sarah.

We were told the colony had arrived a couple of weeks before we attended to carry out this extraction, but there were several dark sections of comb indicating that there had been colonies in residence in previous years.

**Work carried out in July 2020 by Sarah & John, [the Seal/Kemsing colony extraction team].**